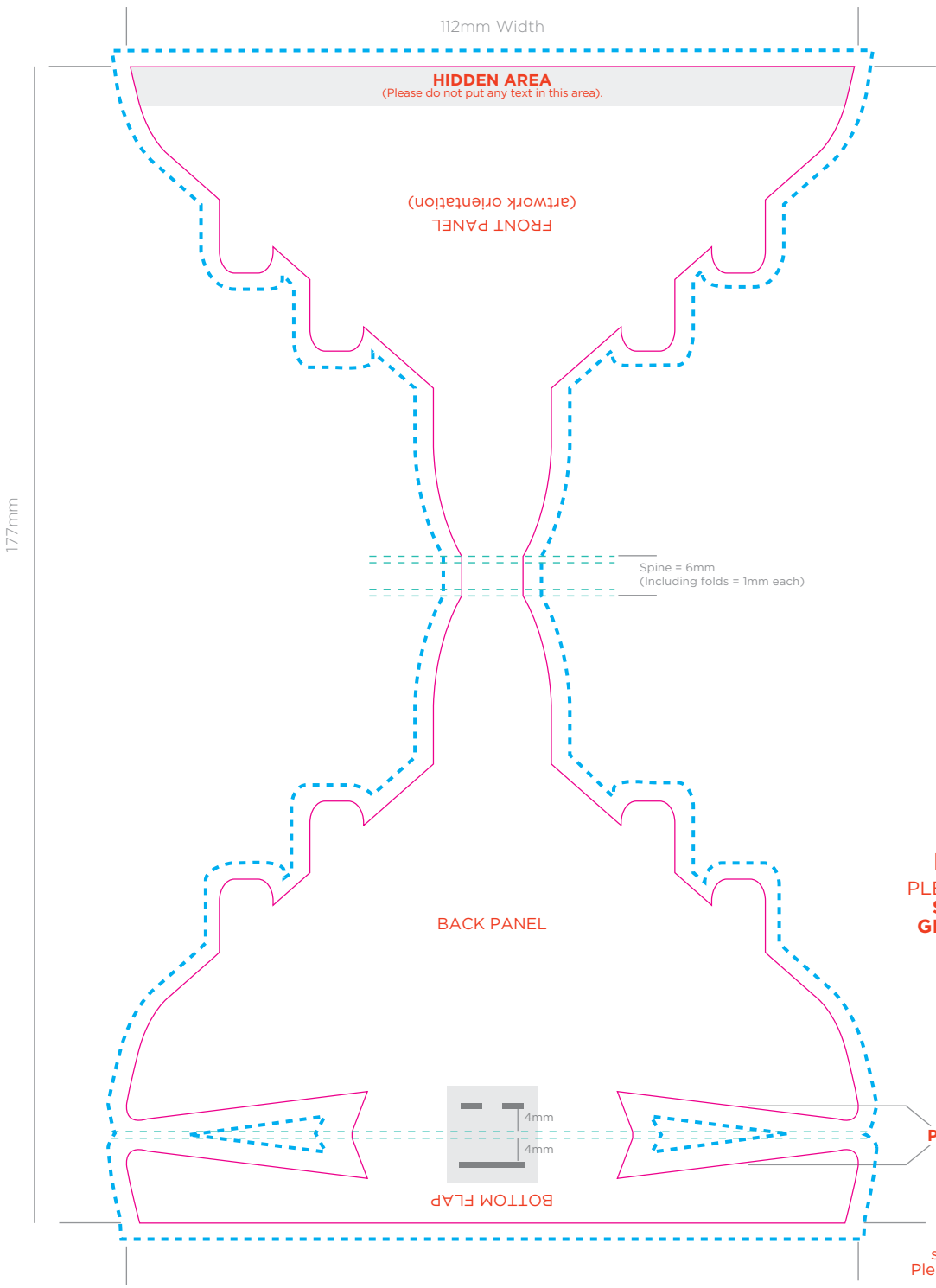


# Aeroplane Seedsticks®

Spec Guideline (SST-006)

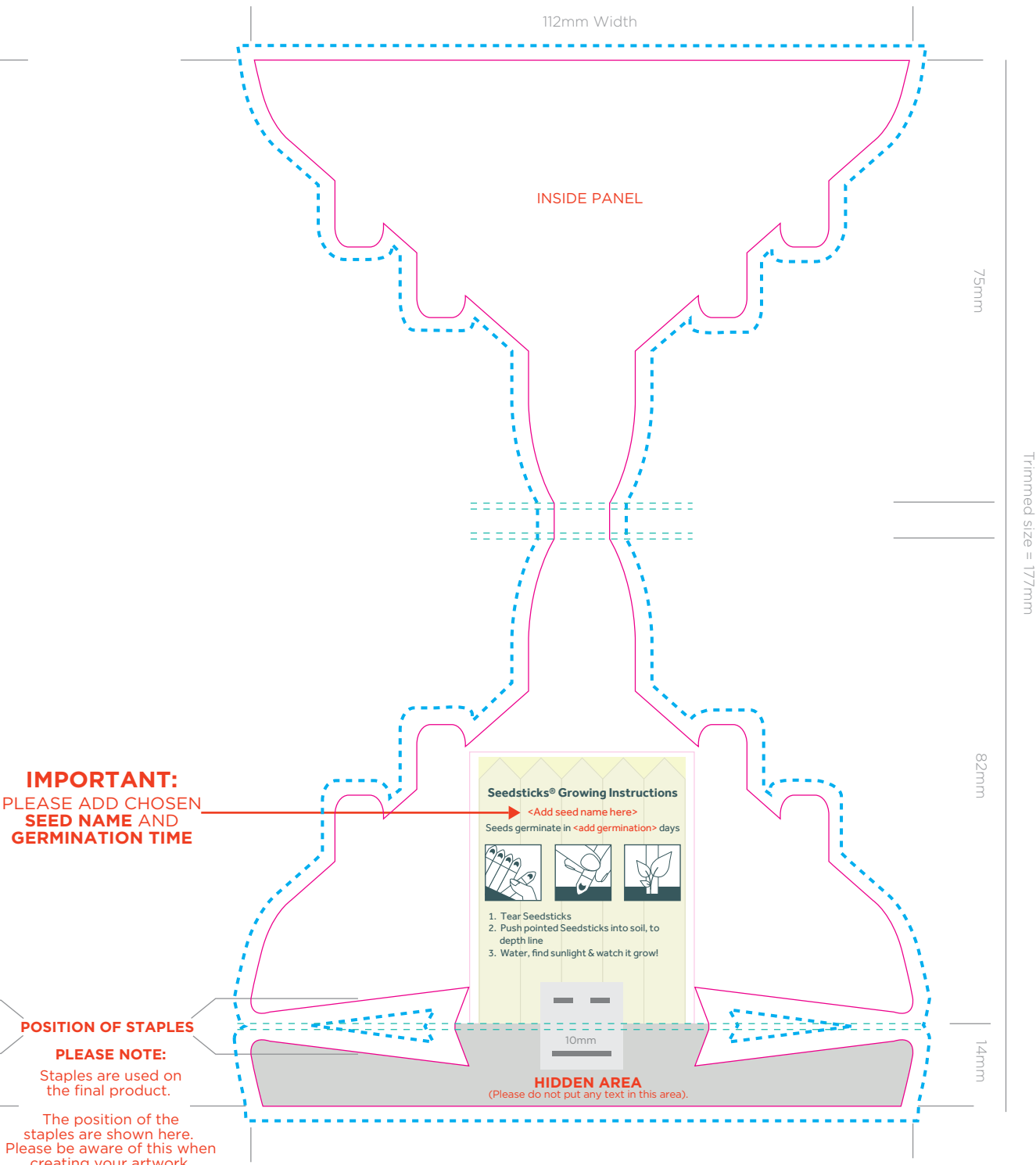
## OUTSIDE COVER

4 colour print



## INSIDE COVER

4 colour print



**IMPORTANT:**  
PLEASE ADD CHOSEN  
SEED NAME AND  
GERMINATION TIME

### POSITION OF STAPLES

**PLEASE NOTE:**  
Staples are used on  
the final product.  
The position of the  
staples are shown here.  
Please be aware of this when  
creating your artwork.

## ARTWORK SPECIFICATIONS / REQUIREMENTS

Art must be supplied in CMYK format or PMS colours specified, RGB is not acceptable  
All fonts must be converted to outlines  
Working file must be compatible with CS5 - Illustrator  
3mm bleed is required beyond the trim lines  
Files to be supplied in PDF, EPS or AI format only  
A PDF proof will be emailed for confirmation of design for you to sign off prior to print production  
No responsibility will be accepted for errors or changes once the artwork has been signed off

### KEY

- Staples
- Fold Lines
- Cut Line
- Bleed Line
- Perforation Line
- Hidden Area