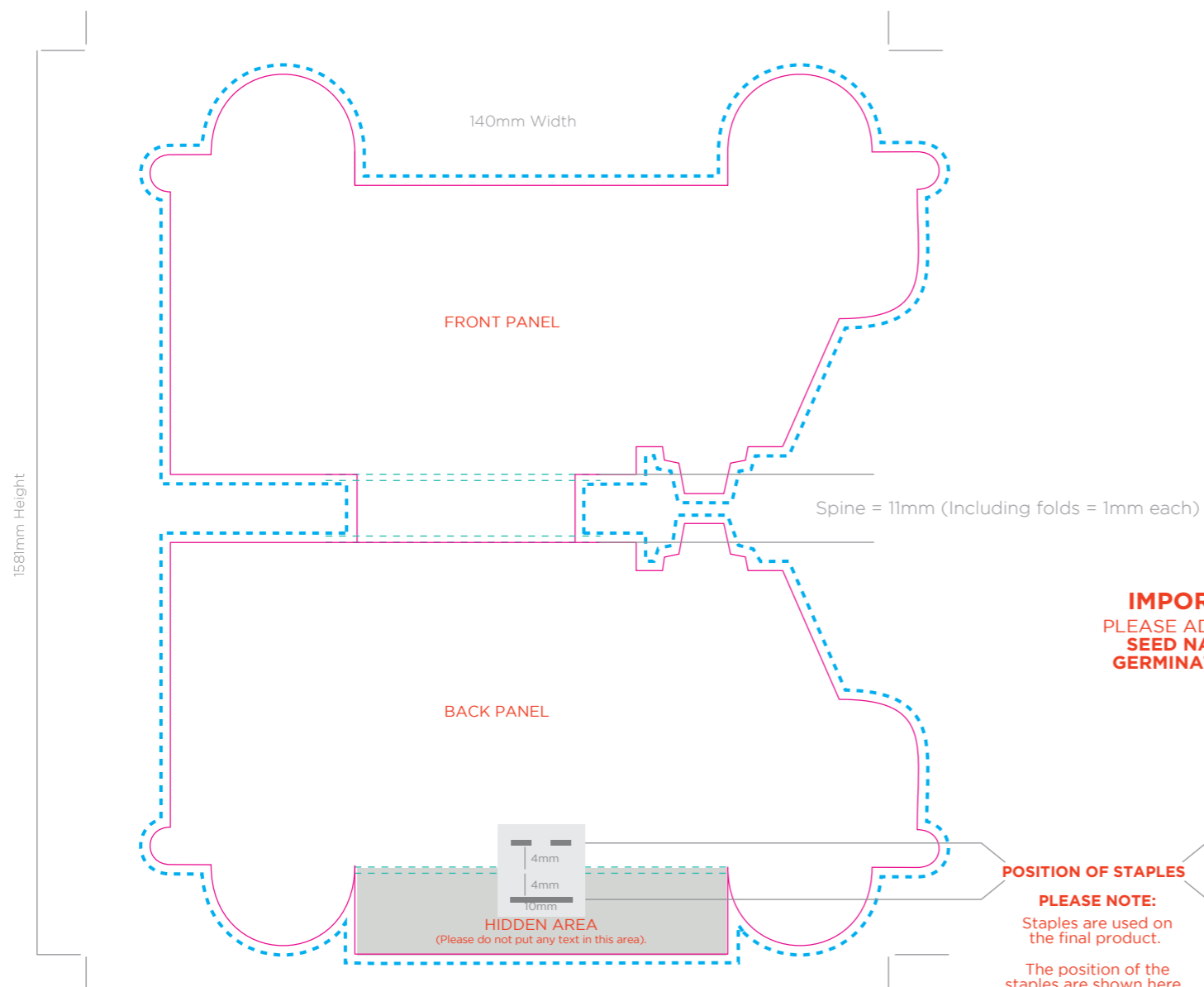


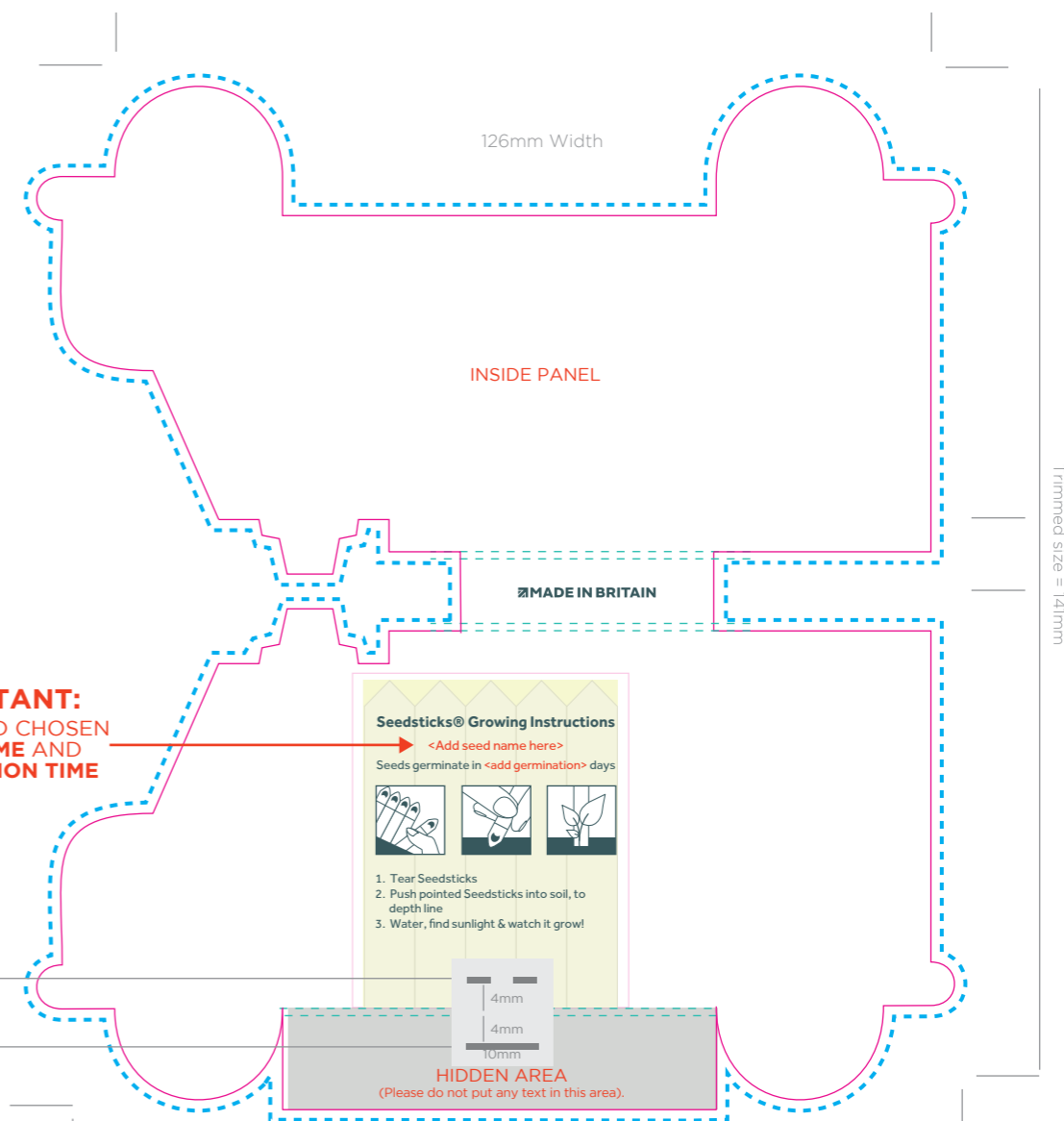
Ambulance Seedsticks®

Spec Guideline (SST-029)

OUTSIDE COVER 4 colour print



INSIDE COVER 4 colour print



POSITION OF STAPLES

PLEASE NOTE:
Staples are used on the final product.
The position of the staples are shown here. Please be aware of this when creating your artwork.

ARTWORK SPECIFICATIONS / REQUIREMENTS

- Art must be supplied in CMYK format or PMS colours specified, RGB is not acceptable
- All fonts must be converted to outlines
- Working file must be compatible with CS5 - Illustrator
- 3mm bleed is required beyond the trim lines
- Files to be supplied in PDF, EPS or AI format only
- A PDF proof will be emailed for confirmation of design for you to sign off prior to print production
- No responsibility will be accepted for errors or changes once the artwork has been signed off

KEY

- Staples
- Fold Lines
- Cut Line
- Bleed Line
- Perforation Line
- Hidden Area