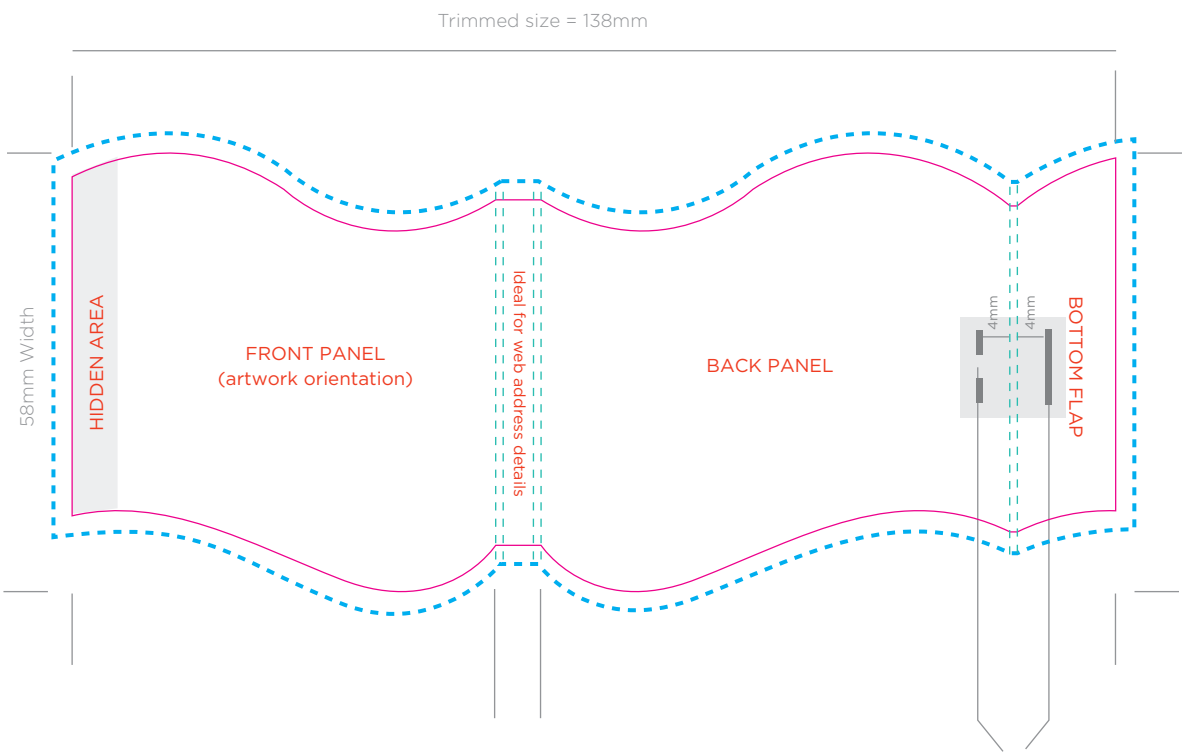


# Flag Seedsticks®

Spec Guideline (SST-026)

## OUTSIDE COVER

4 colour print



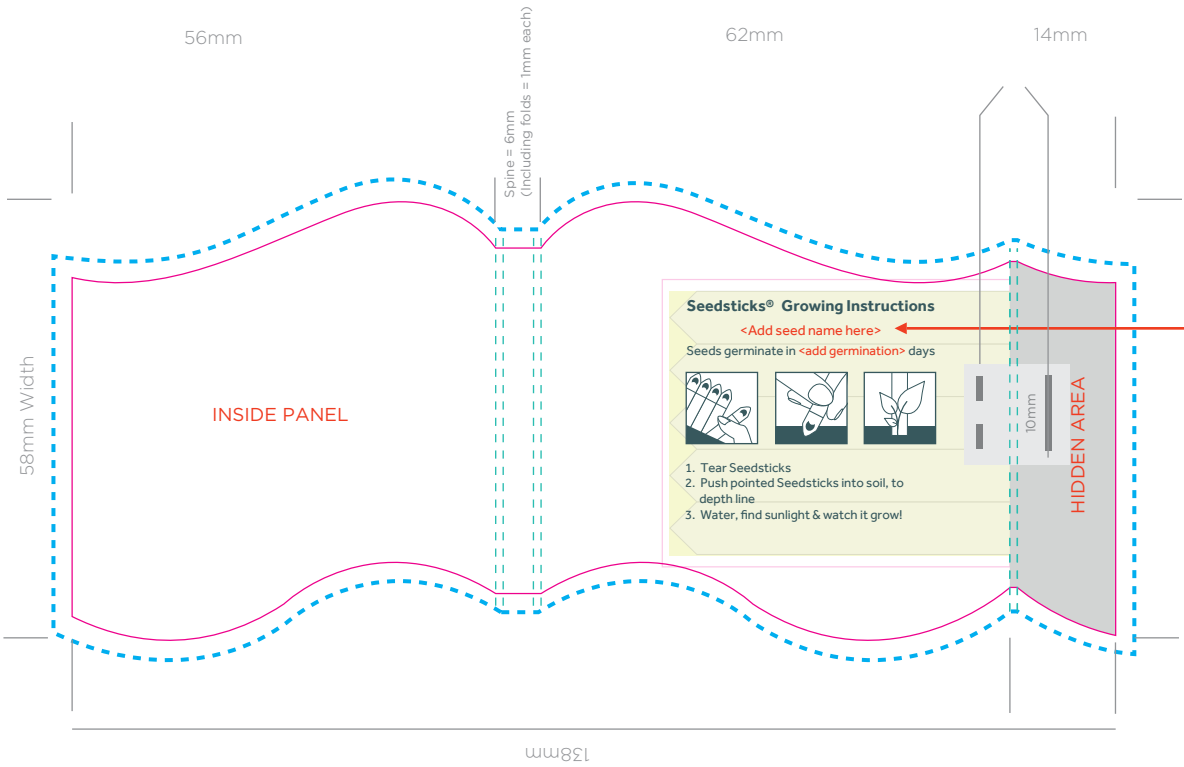
## POSITION OF STAPLES

**PLEASE NOTE:**  
Staples are used on the final product.

The position of the staples are shown here. Please be aware of this when creating your artwork.

## INSIDE COVER

4 colour print



**IMPORTANT:**  
PLEASE ADD CHOSEN SEED NAME AND GERMINATION TIME

## ARTWORK SPECIFICATIONS / REQUIREMENTS

Art must be supplied in CMYK format or PMS colours specified, RGB is not acceptable

All fonts must be converted to outlines

Working file must be compatible with CS5 - Illustrator

3mm bleed is required beyond the trim lines

Files to be supplied in PDF, EPS or AI format only

A PDF proof will be emailed for confirmation of design for you to sign off prior to print production

No responsibility will be accepted for errors or changes once the artwork has been signed off

## KEY

- Staples
- Fold Lines
- Cut Line
- Bleed Line
- Perforation Line
- Hidden Area