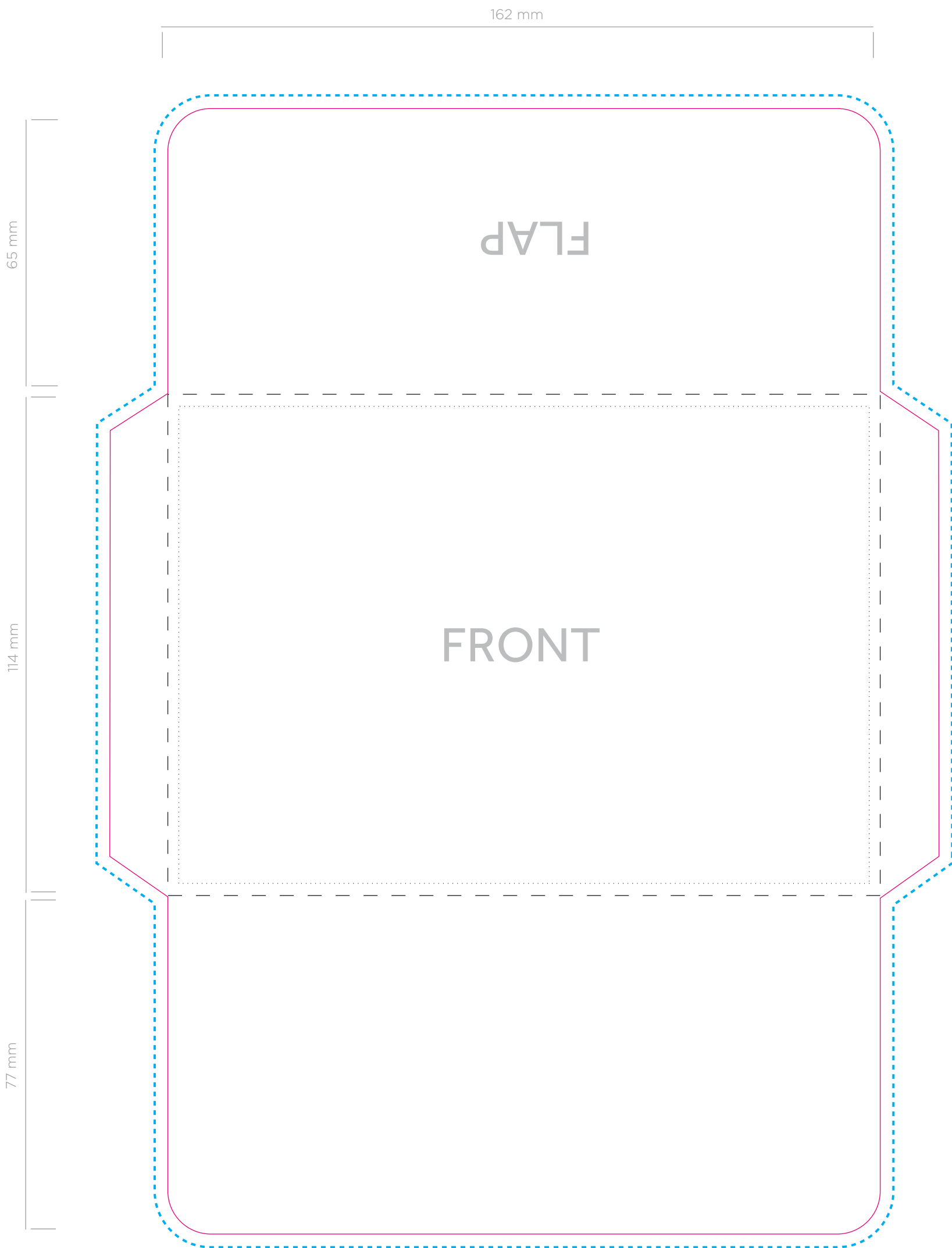


Seeded Paper Envelope A6C6

Spec Guideline (SPR-017)

Size 188 mm x 255.99 mm



ARTWORK SPECIFICATIONS / REQUIREMENTS

Artwork must be supplied in CMYK format or PMS colours specified, RGB is not acceptable
All fonts must be converted to outlines
Note that there is a 5mm print-free area from edge
Working file must be compatible with CS5 - Illustrator
Files to be supplied in PDF, EPS or AI format only
A PDF proof will be emailed for confirmation of design for you to sign off prior to print production
No responsibility will be accepted for errors or changes once the artwork has been signed off
Ink coverage must be no more than 30%

PRINTING ON SEEDED PAPER

Solid dark printing is not recommended

Designer Tips

Avoid using heavy ink coverage
Avoid printing very small text on dark coloured backgrounds. We recommend at least 8 - 9 pt
If using photos of people, be aware that the seeds may show through on lighter areas of the face and eyes

KEY

— Cut Line
- - - - - Bleed Line
... Recommended Print area