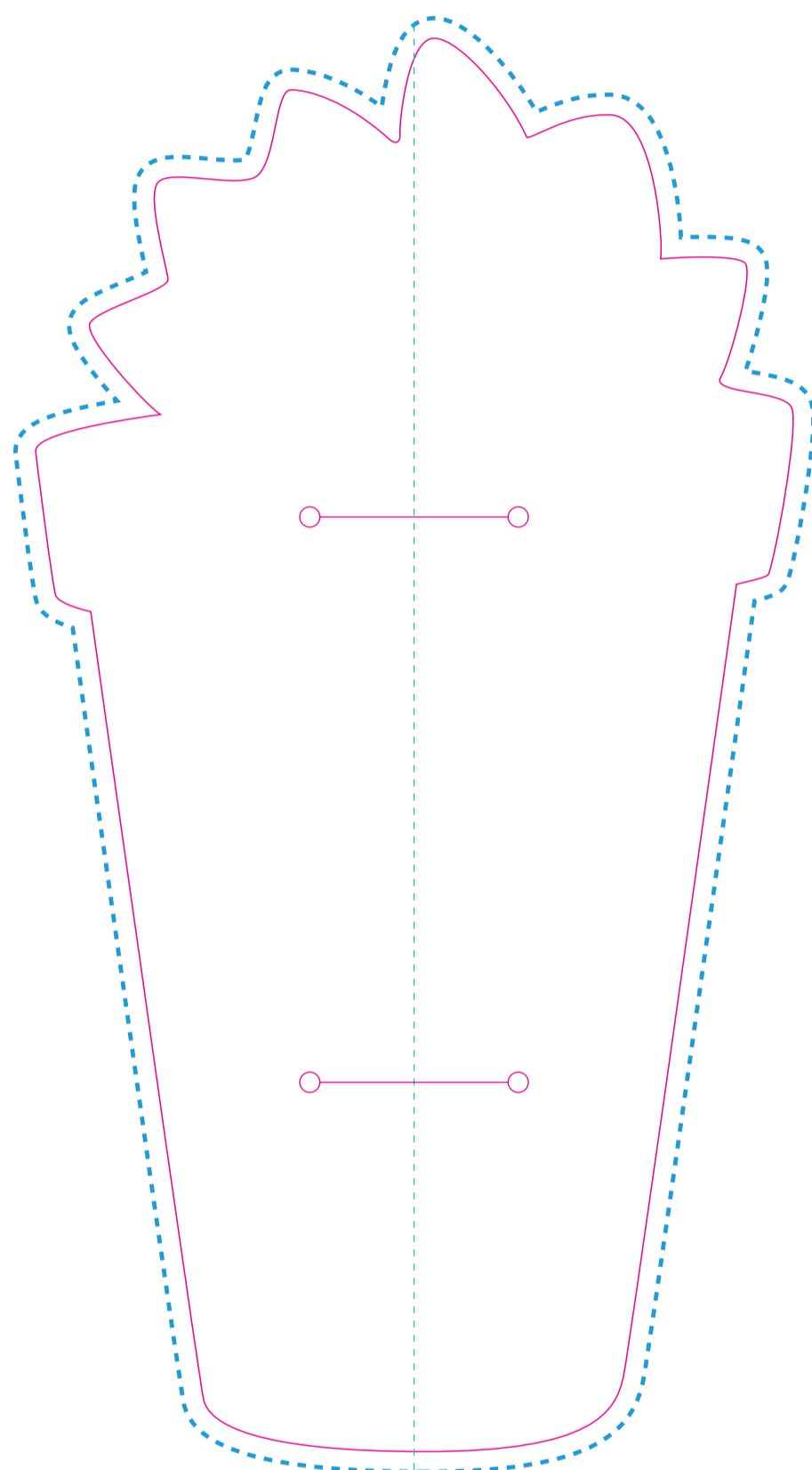


Blooming Pencil with Plant Pot Shaped Backing Card

Spec Guideline (STA-024)

Sleeve
Finished size (112.658 mm X 210 mm)

Front



Back



ARTWORK SPECIFICATIONS / REQUIREMENTS

Artwork files to be supplied in PDF format only, with artwork created using vector format. JPEG will not be accepted.

All artwork files should be supplied in CMYK colour format. RGB is not accepted.

Please turn off the GUIDE layers on the template, before sending the PDF.

A 3mm bleed is required beyond the cut lines.

QR codes should be a minimum 25mm in height

A PDF proof will be emailed to you, to sign off prior to going into print production. Please take special care to check your artwork, design and layout.

No responsibility will be accepted for errors or changes once the PDF proof has been approved.

KEY

- Fold Lines
- Cut Line
- Bleed Line