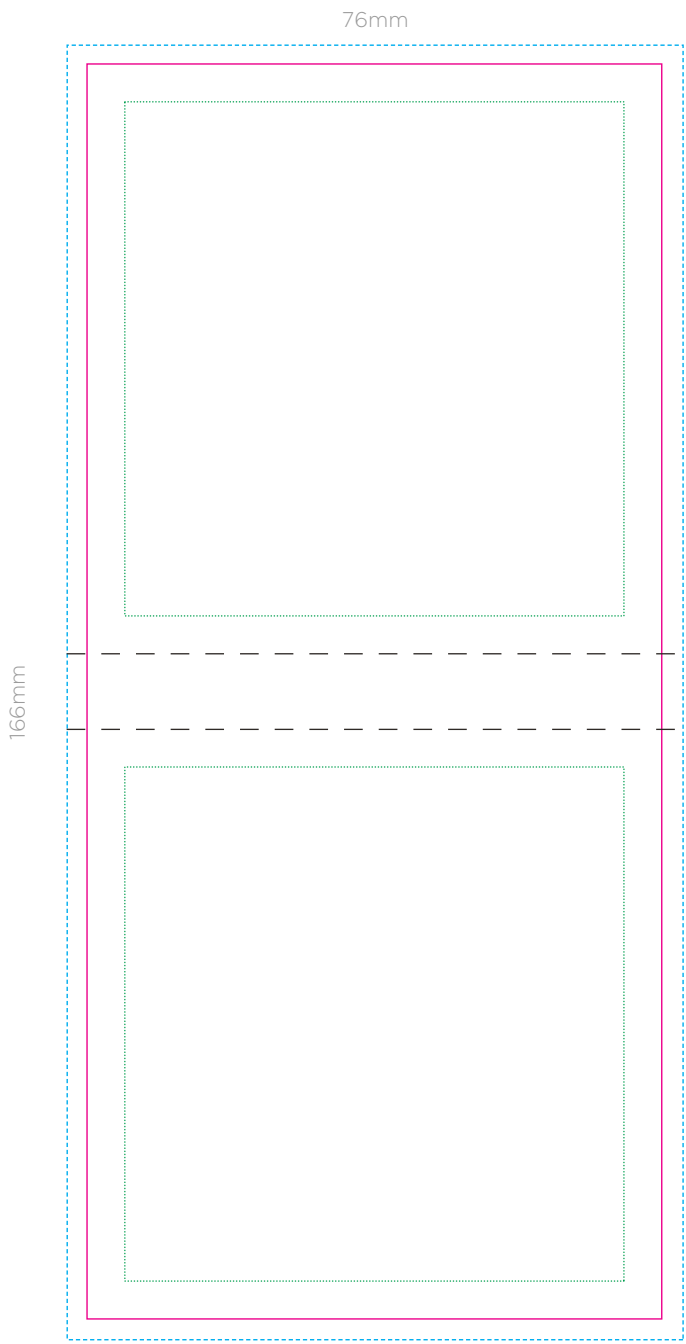


# Seeded Paper Sticky Notes

Spec Guideline (SPR-043)



## ARTWORK SPECIFICATIONS / REQUIREMENTS

- Artwork must be supplied in CMYK format or PMS colours specified, RGB is not acceptable
- All fonts must be converted to outlines
- Note that there is a 5mm print-free area from edge
- Working file must be compatible with CS5 - Illustrator
- Files to be supplied in PDF, EPS or AI format only
- A PDF proof will be emailed for confirmation of design for you to sign off prior to print production
- No responsibility will be accepted for errors or changes once the artwork has been signed off
- Ink coverage must be no more than 30%

## PRINTING ON SEEDED PAPER

- Solid dark printing is not recommended
- Designer Tips**
- Avoid using heavy ink coverage
- Avoid printing very small text on dark coloured backgrounds. We recommend at least 8 - 9 pt
- If using photos of people, be aware that the seeds may show through on lighter areas of the face and eyes

### KEY

- Cut Line
- Bleed Line
- Recommended Print area