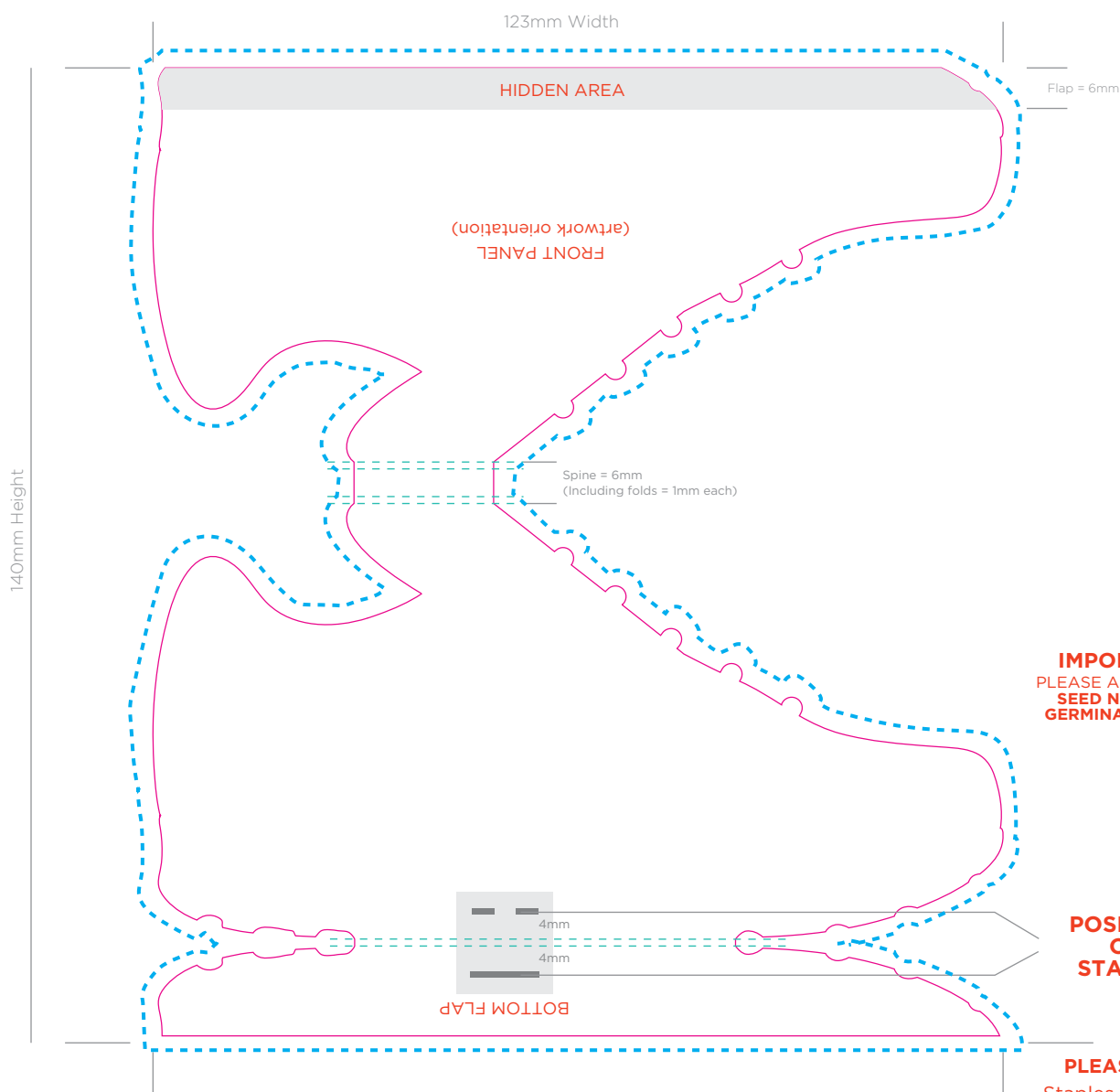


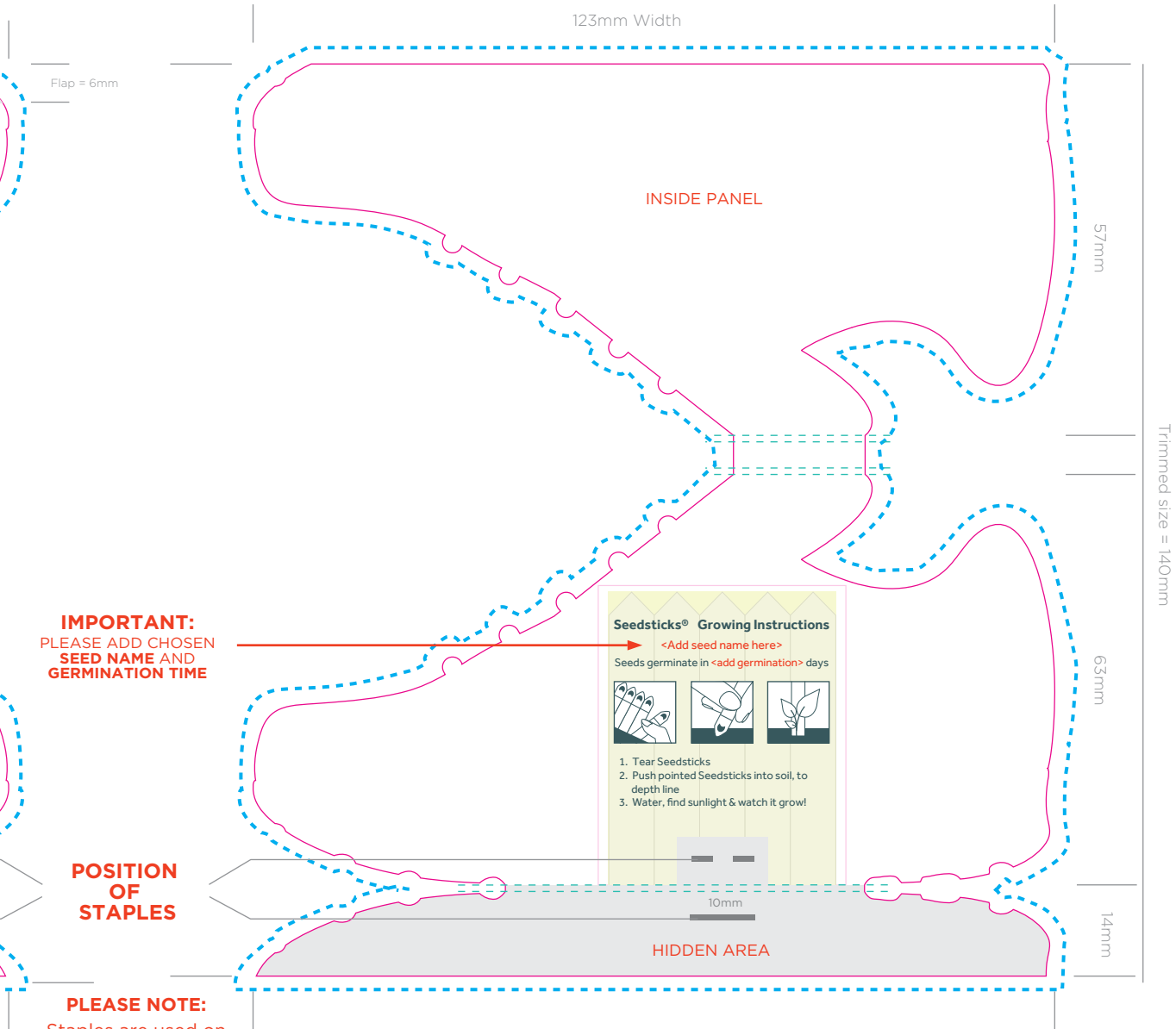
Shoe Seedsticks®

Spec Guideline (SST-022)

OUTSIDE COVER 4 colour print



INSIDE COVER 4 colour print



IMPORTANT:
PLEASE ADD CHOSEN
SEED NAME AND
GERMINATION TIME

**POSITION
OF
STAPLES**

PLEASE NOTE:
Staples are used on
the final product.

The position of the
staples are shown here.
Please be aware of this when
creating your artwork.

ARTWORK SPECIFICATIONS / REQUIREMENTS

- Art must be supplied in CMYK format or PMS colours specified, RGB is not acceptable
- All fonts must be converted to outlines
- Working file must be compatible with CS5 - Illustrator
- 3mm bleed is required beyond the trim lines
- Files to be supplied in PDF, EPS or AI format only
- A PDF proof will be emailed for confirmation of design for you to sign off prior to print production
- No responsibility will be accepted for errors or changes once the artwork has been signed off

KEY

- Staples
- Fold Lines
- Cut Line
- Bleed Line
- Perforation Line
- Hidden Area